



DPF PARTICULATE CLEANING MACHINES



www.dpfmac.com

DPF MAC

The part that filters particulates which occur in the exhaust gas as a result of combustion process in diesel cars is termed as particulate filter. Its function is to reduce exhaust particulate emission by removing particulates from the exhaust gas.

Diesel Particulate Filter has been designed to capture exhaust soot and harmful gases which arise from combustion in cars with diesel engine and to store all harmful matters in order to contribute to a cleaner nature. Particulate filter is used in all diesel-engine cars in order to meet emission regulations by reducing exhaust emissions and particulates such as hydrocarbons (HC) and carbon monoxide (CO) in this system that is designed in line with European standards. The purpose of this system is to ensure that exhaust gas has lower emission value by filtering particulates.

It leads to reduced performance of the car, it reduces motor propelling force and wheel idling cycle is increased. It causes overconsumption of fuel. It changes smell of exhaust as it is emitted from exhaust pipe. Filter damages the engine when it is attached. Clogged diesel particulate filter causes air and environmental pollution. Therefore it is essential that Diesel Particulate Filter (DPF) be cleaned in case of any failure.

Reduces the performance of the vehicle, the vehicle falls out of traction. Idling circuit increases. Fuel consumption occurs with more. It exits the exhaust outlet in the form of white steam and the smell of the exhaust changes. The filter damages the engine when clogged. A clogged diesel particulate filter pollutes the air and the environment. Therefore, it is important to clean the vehicle when a particle filter (DPF) malfunction occurs.

When the Diesel Particulate Filter is clogged, the DPF warning light on the vehicle instrument panel also lights up, alerting the driver. If DPF warning light is on, it shows DPF catalytic converter should be cleaned or is clogging up due to short-distance / low-speed driving.

First of all, the purpose of the system is to reduce carbon release harmful to the environment from vehicle exhausts. Catalytic converter (catalyst) or particle filter, designed to render harmful substances in the exhaust gas released from the combustion chamber in the engine harmless, it is often a part added to the exhaust pipe immediately after the manifold. The exhaust gases passing through the catalytic converter, which are made of ceramics and whose pores are coated with materials providing catalytic effect, react in the special ceramic structure inside the catalytic converter and turn into harmless substances.

Substances entering the catalyst as NO_x (nitrous oxide), CO (carbon monoxide) and HC (hydrocarbons) are released into the air from the exhaust as N₂ (nitrogen), CO₂ (carbon dioxide) and H₂O (water, steam) harmless to living things as a result of the reaction. In other words; the catalytic converter is a combustion chamber. It burns unburned toxic gases without flame, turning them into nitrogen, oxygen and water vapor and releases it into the atmosphere. It is designed to capture particulates or soot particles in diesel vehicles, especially in engines that comply with Euro 4,5,6 norms.

In addition, some vehicles have exhaust gas recirculation called EGR. It is a part that should not be neglected as it has an important place in the healthy operation of the engine. The institutions accumulated in the channels through which the exhaust gas passes can be cleaned and the valve can be used again. However, as a result of excessive contamination, this layer of soot can harden and petrify in some places.



This petrification, even at the micron level, may interfere with proper operation if it is in the opening and closing part of the valve and may cause evasion. Therefore, it is important to perform particle cleaning.

The three precious metals are used as catalysts for all these operations.

Platinum : It provides oxidation.

Radium : To reduce the converter.

Palladium : It is used to provide stabilization.

Operating range : It is 480 – 650 Celsius.

Converter life : 150.000 km. (average value)

Vehicles that have failed to pass vehicle inspection controls in the world and in our country in recent periods, either they're illegally removing the catalytic converter from their vehicle or they may have to buy catalytic converters again by paying high prices. The most effective method for DPF cleaning operations is to remove the particle filter. Cleaning machines and additives are available for this. The particle filter is removed and attached to the particle cleaning machines. Your particle filter is 100% cleaned by applying chemical drugs and compressed air.

By combining our patented machine, whose design belongs to our company, with a special formula solvent, we clean the clogged catalytic converter or particle filter in a very short time.



A sustainable world for our children to let go ...



SPEED XL **2500**

Our cabin model is produced for the cleaning of DPF filters and catalytic converters of all brands and models, from the smallest vehicle to heavy vehicle. Thanks to its strong and reassuring structure, our machine, which is designed to serve you for many years without any problems, is made of 304 stainless steel, including the engine, internal and external parts. All of its parts are produced with the equipment that we have proven and experienced in the international sector. Thanks to its renewed and improved software, you can automatically take clean water, test, report and wash with adjusted air. Does not require installation. It provides 100% cleaning of all particulate filters such as cars, light commercials, trucks, marinas, trains, ships and generators. 380 volt electricity and air coming from 8 bar compressor is enough for this air-supported model to work. Thanks to its test feature, it provides the opportunity to test and report the clogged DPFs before and after cleaning. Thanks to the filter inside the machine, it offers the feature of filtering the particles coming out of the cleaned filter. With Android software, we can be with our

customers remotely. Thanks to its renewed and improved software, all the settings you will need are at hand. With the simple usage menu, washing time, test time, temperature setting, language setting (English, French, German and Turkish), air setting can be adjusted as desired. It comes with all necessary spare parts and connection adapters.



MAIN FEATURES OF THE MACHINE

- Particle and catalyst binding feature up to 180 cm.
- Connecting apparatus up to any size and diameter.
- Feature of adjusting the water flow rate with automatic electric valve.
- Water flow power max. 0-16 bar feature.
- Tank and water level control system with sensor.
- Resistance protection sensor.
- 380V AC operation.
- Working with a compressor between 8-10 bar.
- Ability to throw out the pollution that has softened during cleaning with air support.
- Automatic clean water filling feature.
- Air test and reporting feature.





TECHNICAL SPECIFICATIONS

- Easy to use menu.
- Manuel use feature.
- 8000W redundant water and chemical heating resistor.
- Low water alert.
- Usage in 4 languages (English, French, German and Turkish).
- Fully 304 stainless steel case, filter, pump and fittings.
- Ability to adjust the air optionally during washing.
- Washable and reusable environmentally friendly filter system.
- Separate engine power options for cars and heavy vehicles.
- Adjustable heat settings.
- Adjustable working time.
- Audible start and end warning.
- 100 lt. stainless water tank.
- Adjustable conditioning air inlet.
- Various connection elements (exhaust fittings, flanged exhaust apparatus, optional hose types in different sizes)
- Pneumatic piston Euro6 filter apparatus.
- Pneumatic pedal pivoting compression head.
- Crushing vertical adjustable stainless pump.
- Adjustable air strike syste

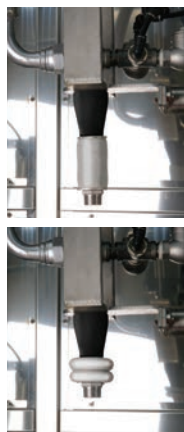
External Dimensions

Width	182 cm
Depth	105 cm
Height	200 cm

Internal Dimensions

Width	150 cm
Depth	100 cm
Height	142 cm

Weight 650 kg
Operating Voltage 380V
Stainless Water Pump 4 KW
5,5 Hp - 50 Hz. 2900Min.



SPEED 2500

Our cabin model is produced for the cleaning of DPF filters and catalytic converters of all brands and models, from the smallest vehicle to heavy vehicle. Thanks to its strong and reassuring structure, our machine, which is designed to serve you for many years without any problems, is made of 304 stainless steel, including the engine, internal and external parts. All of its parts are produced with the equipment that we have proven and experienced in the international sector. Thanks to its renewed and improved software, you can automatically take clean water, test, report and wash with adjusted air. Does not require installation. It provides 100% cleaning of the particle filters of vehicles such as cars and light commercial vehicles. 380 volt electricity and air coming from 8 bar compressor is enough for this air-supported model to work. Thanks to its test feature, it provides the opportunity to test and report the clogged DPFs before and after cleaning. Thanks to its filtering feature, it

offers the feature of filtering the resulting particles. With the Android software with multiple language options (English, German, French and Turkish), remote air adjustment can be adjusted as desired. It comes with all necessary spare parts and connection adapters.



MAIN FEATURES OF THE MACHINE

- Particle and catalyst binding feature up to 150 cm.
- Connecting apparatus up to any size and diameter.
- Feature of adjusting the water flow rate with automatic electric valve.
- Water flow power max. 0-12 bar feature.
- Tank and water level control system with sensor.
- Resistance protection sensor.
- 380V AC operation.
- Working with a compressor between 5-10 bar.
- Air test and reporting feature.
- Automatic clean water filling feature.



TECHNICAL SPECIFICATIONS

- Easy to use menu.
- Manuel use feature.
- 7500W redundant water and chemical heating resistor.
- Low water alert.
- Usage in 4 languages (English, French, German and Turkish).
- Fully 304 stainless steel case, filter, pump and fittings.
- Washable and reusable environmentally friendly filter system.
- Ability to adjust the air optionally during washing..
- Adjustable heat settings.
- Adjustable working time.
- Audible start and end warning.
- 60 Lt. stainless water tank.
- Adjustable conditioning air inlet.
- Various connection elements (exhaust fittings, flanged exhaust apparatus, optional hose types in different sizes)
- Pneumatic pedal pivoting compression head.
- Crushing stainless pump.



External Dimensions

Width	138 cm
Depth	105 cm
Height	200 cm

Internal Dimensions

Width	105 cm
Depth	100 cm
Height	142 cm

Weight 400 kg
 Operating Voltage 380V
 Stainless Water Pump 1.5 KW
 2 Hp - 50 Hz. 2900Min.



LINE 2100

Our machine is produced to clean the clogged diesel particle filters, catalytic converters and all filters found in diesel vehicles. It has a very simple use thanks to its ergonomic and portable structure. It provides 100% cleaning of all particulate filters up to all the automobiles and the light commercials. The engine and all working equipment of it are made of 304 stainless steel. 220 volt electricity and air coming from 8 bar compressor is enough for this air-supported model to work. Thanks to its software, washing time, air setting, heat setting and language settings (English-Turkish) can be adjusted as desired. It comes with all necessary spare parts and connection adapters.



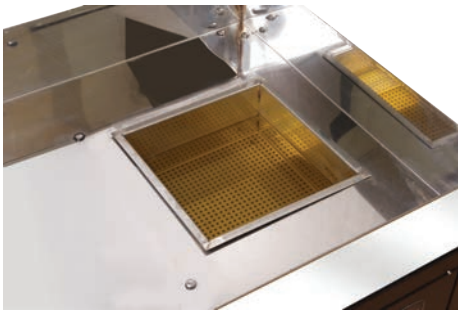
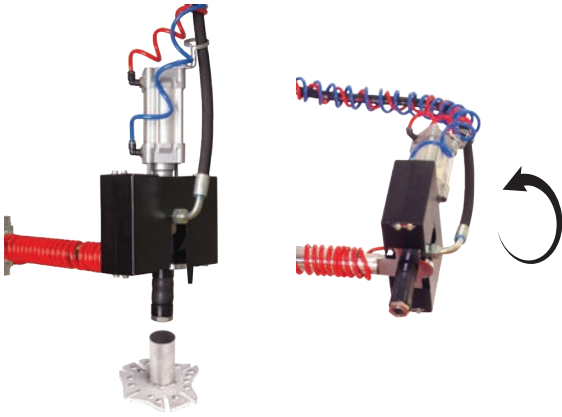


TECHNICAL SPECIFICATIONS

- Complete stainless steel internal fasteners.
- Stainless 14 lt. water reservoir.
- 4500W redundant heat resistor.
- Easy to use pneumatic particle filter holder.
- Right - left, up - down moving head.
- Conditioned adjustable air inlet.
- Pneumatic mechanical protection cage.
- Adjustable air strike system.

External Dimensions

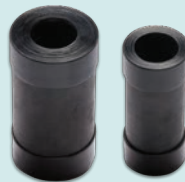
Width 90 cm
Depth 75 cm
Height 65 cm
Installed Height of the machine 200 cm
Weight 110 kg
Operating Voltage 220V
Motor power 1.5 Hp



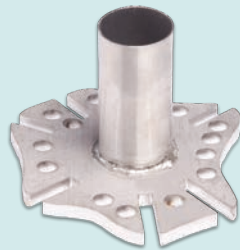
Spare Parts



Filter bag



Flange pipe



Mounting flange



Particles Cleaner



Radiator Cleaner

CERTIFICATES

STANDARD TEST & INSPECTION

Standard
Test & Inspection

UYGUNLUK SERTİFİKASI
ATTESTATION OF COMPLIANCE

Belge No / Certificate No : ISO-347

Firmamız adı / Name and Address of the Company : ÇINAR MAKİNA HATEM ERDEMİR ŞEKER

Adres / Address : MERKEZ MAH. CEYLAN SK. NO:8 KAĞITHANE İSTANBUL / TÜRKİYE

Ürün Adı / Product Name : PARTİKÜL TEMİZLEME MAKİNASI

Marka / Model / Tip / Mark / Model / Type : DPFMAC / LINE 2100, SPEED 2600, SPEED 2500 XL.

Referans Standard(lar) / Reference Standard(s) : EN ISO 12100:2011, EN 60204-1:2016, EN ISO 13857:2008, EN 547-1+A1:2014

Onay Dayanağı / Date of Attestation : Teknik dokümantasyon, L-2017-082 no' lu Test raporu / File of technical documentation, Test Report, Ref. No L-2017-082

The technical file and test report of the above product have been checked and found in compliance with 2006/42/EC and 2014/33/EU, on October 2 2016 mechanical safety directive and electrically designed for specific voltage limits regulation on equipment by European Union Technical Committee. It confirms that the listed equipment (not annex IV equipment) complies with the principal provision requirement of the directives.

Other relevant Directives have to be observed. With reference technical file of the product is considered to conform to the Internal Production Control of the above-mentioned EC Directive. This certificate does not abrogate the compulsory obligation of the manufacturer to issue the declaration of conformity and Compliance with the essential safety requirements.

Teknik Dosya ve test raporları incelenerek, belirlenen (ürün Avrupa Birliği Teknik Komisyonu tarafından 2 Ekim 2016 tarihinde yayınlanan 2006/42/AT ve 2014/33/AB Makine Emniyeti Yönetmeliği ve Belirli Gerilim Sınırını İlgili Tasarımlar Elektrik Ekipman ile İlgili Yönetmelik uygulanması kapsamında Sisteminin testlerinin (EK IV hariç) direktiflerin temel koruma şartlarına uygun olduğunu belirlenmiştir.

Diğer ilgili direktiflere uyulmaktadır. Referans teknik dosya ile ürünü yukarıda belirtilen AT Direktif için diğer kontrollerine uygunluğu kabul edilir. Bu sertifika üreticinin uygunluk beyan düzenleme ve Temel Gereklere uyum zorunluluğuna ortadan kaldırmaz.

Sertifika Düzenleme Tarihi / Issue Date : 29.12.2020

Belge Geçerlilik Tarihi / Validity of the certificate : 28.12.2021

CE

Nurcan GÜNDOĞAN
Genel Müdür
General Manager

QC STANDARD SERTİFİKASYON MUAYENE LABORATUVAR VE EĞİTİM HİZMETLERİ A.Ş.
Gözyoluk Mahallesi 5775 Sokak No:1/A Yenimahalle/ANKARA
TEL: +90 236 302 01 44 FAX: +90 236 302 01 43
E-mail: standard@standard.com.tr
Web : www.standard.com.tr

EN ISO 12000- EN 60204-1/A1
EN ISO 13857 - EN 547-1+A1

Sertifika
Certificate

DSR
CERTIFICATION

ÇINAR MAKİNA - HATEM ERDEMİR ŞEKER

MERKEZ MAH. CEYLAN SK. NO:8 KAĞITHANE / İSTANBUL

DSR BELGELENDİRME tarafından denetlenmiş ve uygulamakta olduğu İş Sağlığı ve Güvenliği Yönetim Sisteminin Occupational and Safety Management System meet the requirements of

ISO 45001:2018

standartına aşağıdaki kapsamda uymakta olduğu görülmüştür.
standard for the following activities.

MAKİNE ÜRETİMİ
PRODUCTION OF MACHINE

Sertifika No / Certificate No: ISG-20.01.368

04.01.2021 / 04.01.2021 / 03.01.2022
Sertifika Tarihi / Certificate Date / Sertifika Son Başım Tarihi / Certificate Last Issue Date / Sertifika Geçerlilik Tarihi / Certificate Expiry Date

3 Yıllık / 3 Yıllık / 3 Yıllık
Belgeleme Periyodu / Certification Period / Belgeleme Periyodu / Certification Period

DSR
CERTIFICATION

ONAY
APPROVAL

DSR TEKNİK MUAYENE SERTİFİKASYON HİZ. LTD. ŞTİ.
Yenişehir Mah. Sahilvi Sk. Halka Bypass Oba 2/1 A Blok No:287 PENDİK / İSTANBUL / TÜRKİYE Tel: +90 216 666 88 35
E-mail: info@dsrbelgeleme.com.tr - Web: www.dsrbelgeleme.com.tr

ISO 45001:2018

Sertifika
Certificate

DSR
CERTIFICATION

ÇINAR MAKİNA - HATEM ERDEMİR ŞEKER

MERKEZ MAH. CEYLAN SK. NO:8 KAĞITHANE / İSTANBUL

DSR BELGELENDİRME tarafından denetlenmiş ve uygulamakta olduğu Çevre Yönelim Sisteminin Environmental Management System meet the requirements of

ISO 14001:2015

standartına aşağıdaki kapsamda uymakta olduğu görülmüştür.
standard for the following activities.

MAKİNE ÜRETİMİ
PRODUCTION OF MACHINE

Sertifika No / Certificate No: EMS-20.01.368

22.01.2020 / 04.01.2021 / 03.01.2022
Sertifika Tarihi / Certificate Date / Sertifika Son Başım Tarihi / Certificate Last Issue Date / Sertifika Geçerlilik Tarihi / Certificate Expiry Date

3 Yıllık / 3 Yıllık / 3 Yıllık
Belgeleme Periyodu / Certification Period / Belgeleme Periyodu / Certification Period

DSR
CERTIFICATION

ONAY
APPROVAL

IAF
ACCREDITED

IAS
ACCREDITED

DSR TEKNİK MUAYENE SERTİFİKASYON HİZ. LTD. ŞTİ.
Yenişehir Mah. Sahilvi Sk. Halka Bypass Oba 2/1 A Blok No:287 PENDİK / İSTANBUL / TÜRKİYE Tel: +90 216 666 88 35
E-mail: info@dsrbelgeleme.com.tr - Web: www.dsrbelgeleme.com.tr

ISO 14001:2015

Sertifika
Certificate

DSR
CERTIFICATION

ÇINAR MAKİNA - HATEM ERDEMİR ŞEKER

MERKEZ MAH. CEYLAN SK. NO:8 KAĞITHANE / İSTANBUL

DSR BELGELENDİRME tarafından denetlenmiş ve uygulamakta olduğu Kalite Yönelim Sisteminin Quality Management System meet the requirements of

ISO 9001:2015

standartına aşağıdaki kapsamda uymakta olduğu görülmüştür.
standard for the following activities.

MAKİNE ÜRETİMİ
PRODUCTION OF MACHINE

Sertifika No / Certificate No: QMS-20.01.368

22.01.2020 / 04.01.2021 / 03.01.2022
Sertifika Tarihi / Certificate Date / Sertifika Son Başım Tarihi / Certificate Last Issue Date / Sertifika Geçerlilik Tarihi / Certificate Expiry Date

3 Yıllık / 3 Yıllık / 3 Yıllık
Belgeleme Periyodu / Certification Period / Belgeleme Periyodu / Certification Period

DSR
CERTIFICATION

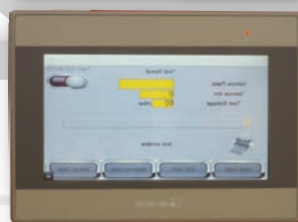
ONAY
APPROVAL

IAF
ACCREDITED

IAS
ACCREDITED

DSR TEKNİK MUAYENE SERTİFİKASYON HİZ. LTD. ŞTİ.
Yenişehir Mah. Sahilvi Sk. Halka Bypass Oba 2/1 A Blok No:287 PENDİK / İSTANBUL / TÜRKİYE Tel: +90 216 666 88 35
E-mail: info@dsrbelgeleme.com.tr - Web: www.dsrbelgeleme.com.tr

ISO 9001:2015





ÇINAR MAKİNA

Merkez Mahallesi, Osmanpaşa Caddesi, Ceylan Sokak, No: 8/A

Kağıthane /İstanbul / Türkiye

+90 212 321 20 09

www.dpfmac.com